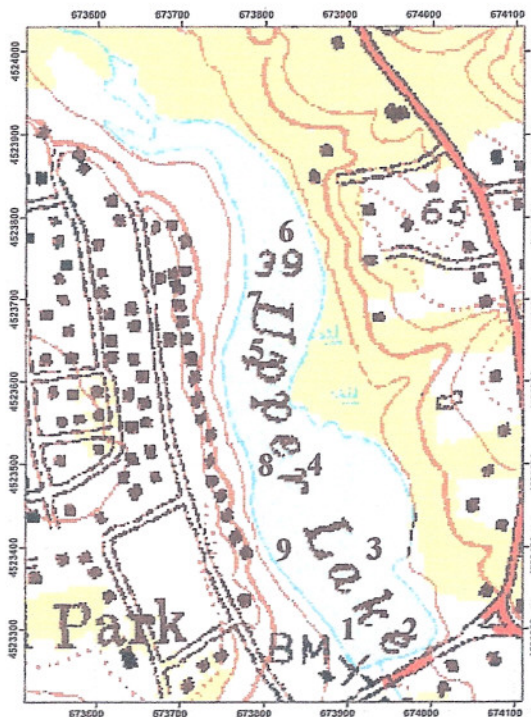


Lake Name: Upper Yaphank Lake
Size: 19 acres
Location: town of Brookhaven, Suffolk County
Sampling Date: 8/9/06
Samplers: Scott Kishbaugh, Nate Kishbaugh, NYSDEC-DOW
 Kathy Schwager, Susan Dobbertin, Elisha Gibson, Long Island TNC



Exotic Plant Species Identified:

Scientific Name	Common Name
<i>Cabomba caroliniana</i>	fanwort
<i>Myriophyllum heterophyllum</i>	variable watermilfoil

Native Plant Species Identified:

Scientific Name	Common Name
<i>Utricularia purpurea</i>	purple bladderwort
<i>Brasenia schreberi</i>	watershield
<i>Potamogeton epihydrus</i>	ribbon leaf pondweed
<i>Potamogeton pusillus</i>	small pondweed
<i>Utricularia minor</i>	lesser bladderwort
<i>Nuphar</i> sp.	yellow water lily
<i>Nymphoides cordata</i>	dwarf water lily
<i>Potamogeton natans</i>	floating leaf pondweed
<i>Potamogeton spirillus</i>	spiral leaved pondweed
<i>Najas flexilis</i>	slender naiad
<i>Hypericum</i> sp.	St. Johns wort
<i>Elodea canadensis</i>	common waterwort
<i>Vallisneria americanum</i>	eelgrass
<i>Juncus</i> sp.	unidentified rush
<i>Hydrocotyle</i> sp.	water pennywort
<i>Ceratophyllum demersum</i>	coontail
<i>Lemna minor</i>	lesser duckweed

Station	NAD27N	NAD27E	Plant Abundance	<i>Myriophyllum heterophyllum</i>	<i>Cabomba caroliniana</i>	<i>Utricularia purpurea</i>	<i>Brasenia schreberi</i>	<i>Potamogeton epihydrus</i>
2	4523072	673917	dense		90	5	5	
3	4523186	673932	dense		90	5	<5	<5
4	4523313	673959	dense		20			
5	4523425	673702	dense					
6	4523517	673769	dense					
7			dense		0			
8	4523210	673793	dense		75			
9	4523116	673880	dense		90			5
L1				floating				

Lake Name:

Upper Yaphank Lake (cont)

Station	NAD27N	NAD27E	Plant Abundance	<i>Potamogeton pusillus</i>	<i>Utricularia minor</i>	<i>Nuphar sp</i>	<i>Nymphoides cordata</i>	<i>Potamogeton natans</i>
2	4523072	673917	dense					
3	4523186	673932	dense	<5	<5	<5		
4	4523313	673959	dense	<5		30	<5	5
5	4523425	673702	dense			10		10
6	4523517	673769	dense			10		10
7			dense					
8	4523210	673793	dense		5	15		
9	4523116	673880	dense					
1								

Station	NAD27N	NAD27E	Plant Abundance	<i>Potamogeton spirillus</i>	<i>Najas flexilis</i>	<i>Hypericum sp</i>	<i>Elodea canadensis</i>	<i>Vallisneria americanum</i>
2	4523072	673917	dense					
3	4523186	673932	dense					
4	4523313	673959	dense	30				
5	4523425	673702	dense	20	15	30	5	5
6	4523517	673769	dense			60		
7			dense					
8	4523210	673793	dense			5		
9	4523116	673880	dense					5
1								

Station	NAD27N	NAD27E	Plant Abundance	<i>Juncus sp</i>	<i>filamentous algae</i>	<i>Hydrocotyle sp?</i>	<i>Ceratophyllum demersum</i>	<i>Lemna minor</i>
2	4523072	673917	dense					
3	4523186	673932	dense					
4	4523313	673959	dense					
5	4523425	673702	dense	5				
6	4523517	673769	dense	10	trace		trace	10
7			dense			single mat		
8	4523210	673793	dense					
9	4523116	673880	dense					
1								

Additional Comments:

- Lake sampled to evaluate source of variable watermilfoil in Lower Yaphank Lake
- Floating fragment of variable watermilfoil found only at launching point (site 1,

L1)