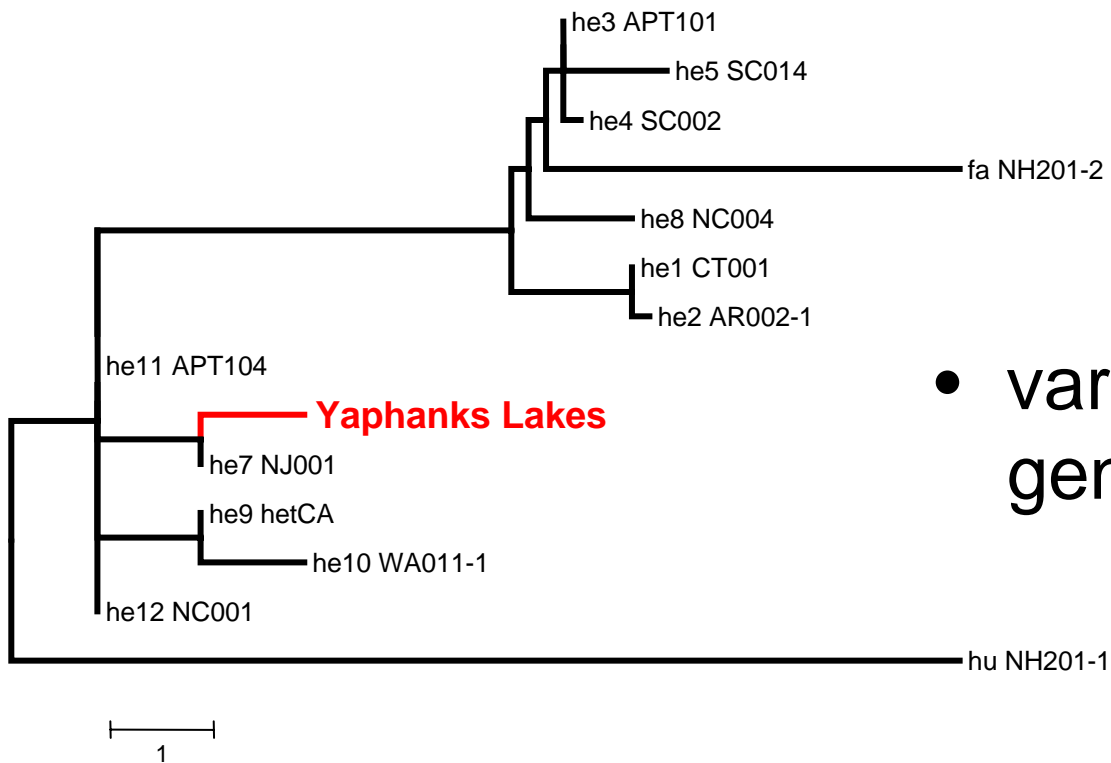


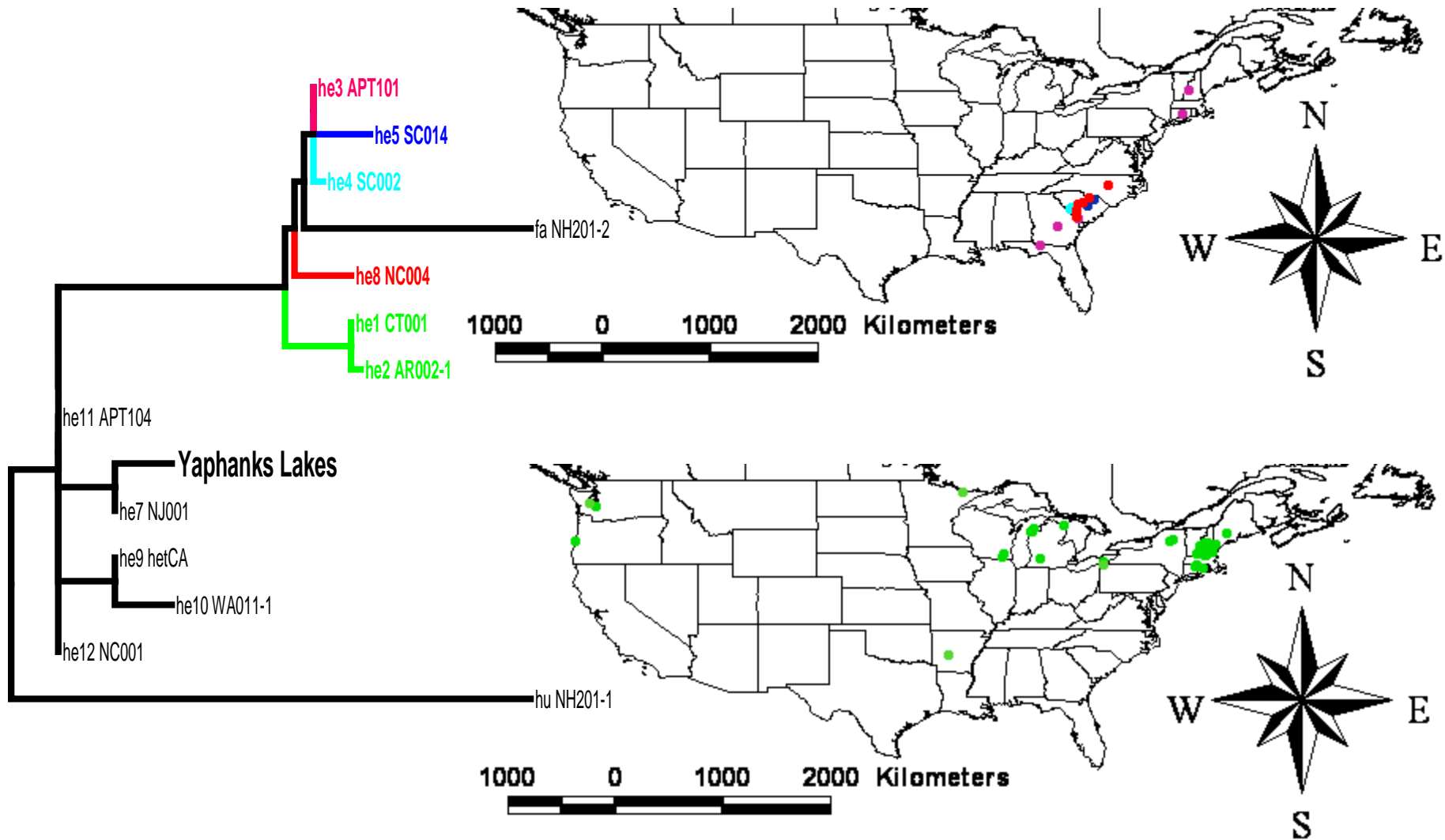
The emphasis is on *variable* in variable-leaf milfoil



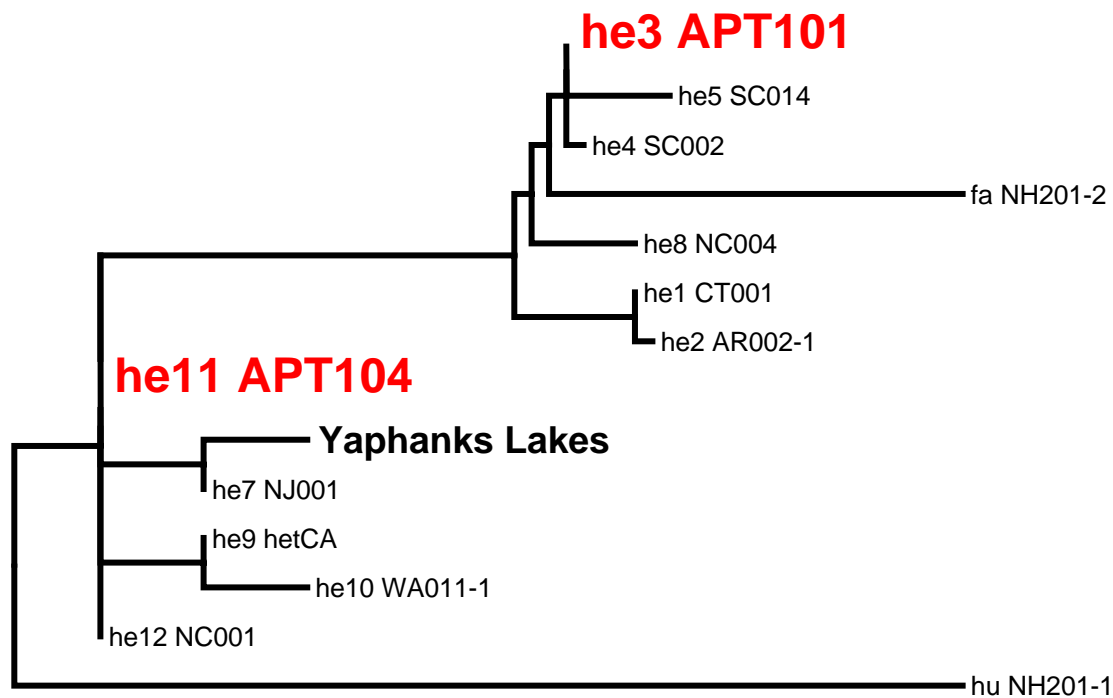
- variable-leaf milfoil is genetically diverse

Phylogenetic tree showing the relationships between different genetic lineages of variable leaf milfoil. The particular strain found in the Yaphank Lakes is indicated in Red.

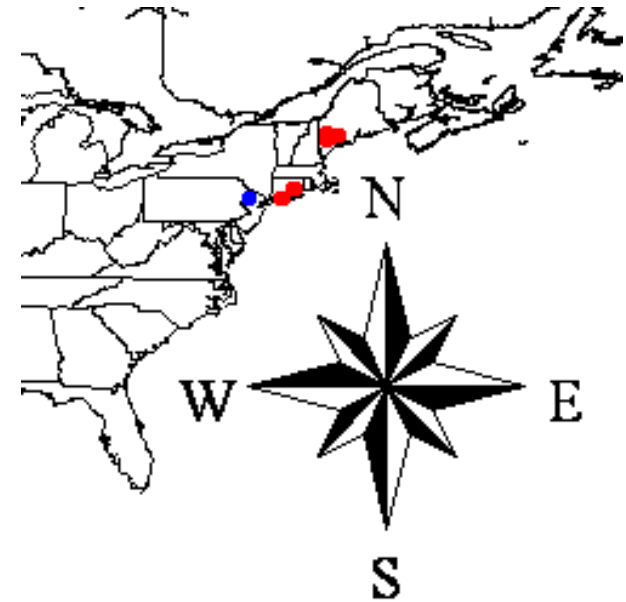
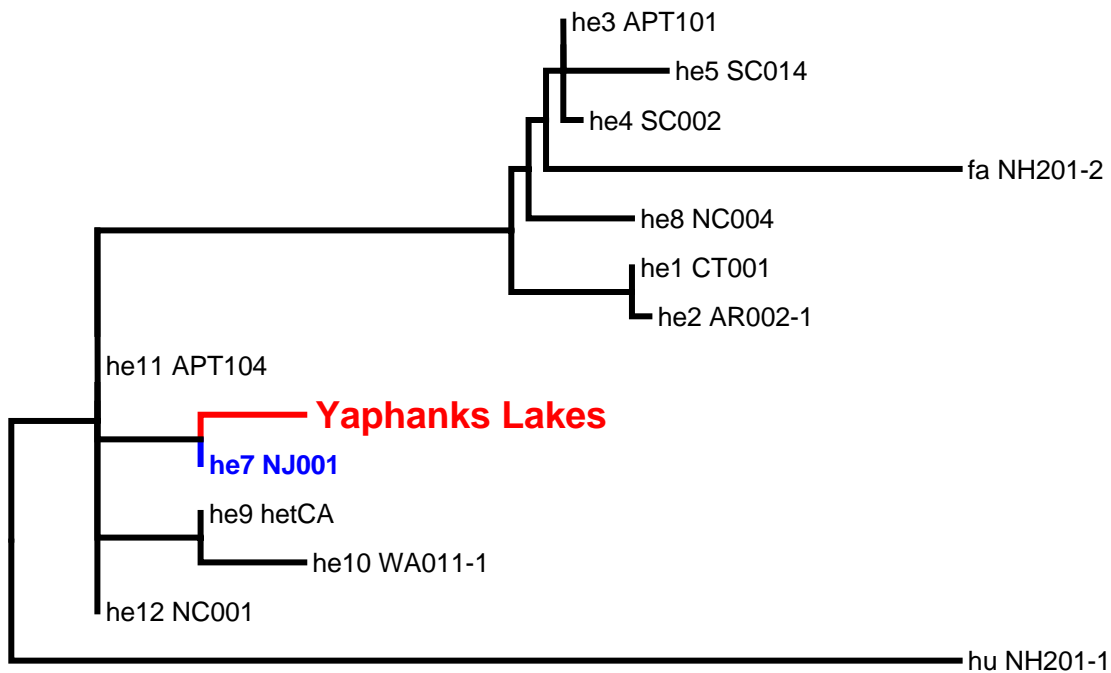
Different geographic origins



Some invasive lineages found in the aquarium trade



- Yaphanks lineage only found in northeast Atlantic Coast States
- Most similar to NJ lineage (one lake)



Why don't we see it anywhere else?

- Haven't searched enough places?
- Unique lineage created through recent hybridization?
- Endemic native lineage that has gone awry?

Potential Implications

- Different lineages have different ecologies
- May require different treatments

